

PROTECTION FOR HIGH FLOOD RISK AREAS.

NEW! PRODUCT LINE.

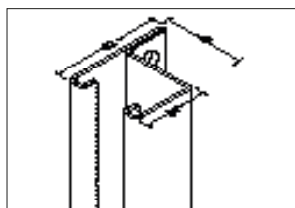
More and more often, we are seeing how inadequately many buildings are protected from the consequences of flooding. Flood water and mud slides penetrating into property put lives and possessions at risk. And they always wreak a high financial cost in terms of damage. Our patented galvanised steel flood protection system now gives you the ability to create effective bulkheads to seal off openings in endangered buildings.



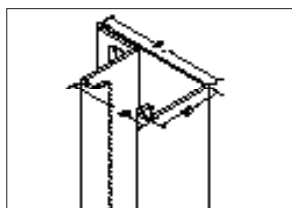
Modular design, the system is universally applicable and can be used in variety of different situations.

The patented securing system enables components to be installed quickly whenever catastrophe looms, adapting to different wall thicknesses and surrounding masonry to provide a firm seal for openings. The highly resistant steel wall that it forms provides active security and a high level of protection in flood-threatened areas.

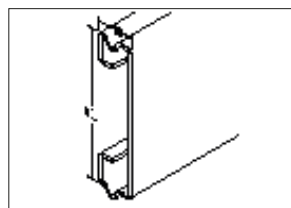
FLOOD BARRIER



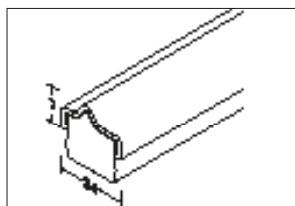
Ref:	Description
901200	Toothed track, outside. 4500mm



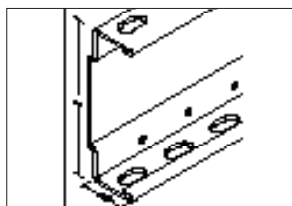
Ref:	Description
901201	Toothed track, Inside. 4500mm



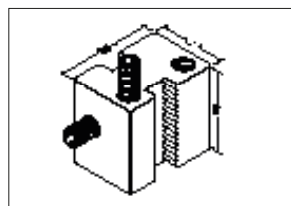
Ref:	Description
901202	Slat 4500mm



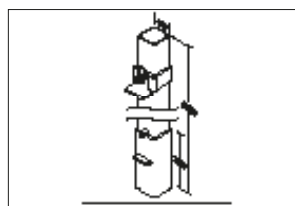
Ref:	Description
901208	Slide Rail. 4500mm



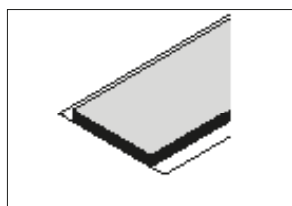
Ref:	Description
901203	Strengthening Beam. 4500mm



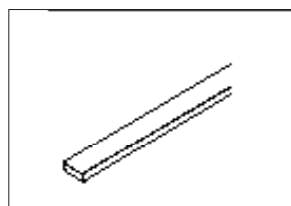
Ref:	Description
905200	Clamp



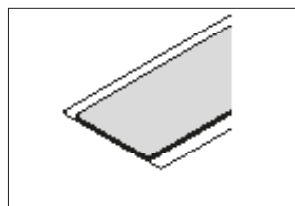
Ref:	Description
901204	Medium Post.



Ref:	Description
905206	Toothed track seal



Ref:	Description
905202	Slat seal



Ref:	Description
905205	Closing seal. (Track band)

SIMPLE INSTALLATION

Manufactured in galvanised steel, the guide tracks, glued with a seal and pre-drilled, are secured with dowels next to the opening or in the reveal and sealed at the base.

The slats are then adjusted to length and pre-prepared seals are stuck on and are slotted into the lateral tracks, tightened with the two clamps and the vertical connection points are sealed.