

CORPORATE PROFILE

BUILDING TRUST, BEYOND SUPPLY



BMGROUP

A MARUBENI ITOCHU STEEL COMPANY



CONTENTS

GENERAL INFORMATION

INTRODUCTION	4-5
COMPANY VALUES	6

COMPANY OVERVIEWS

BM STEEL	8-11
INDUSTRIAL METAL SERVICES	12-15
PULMAN STEEL	16-19
STEEL PLATE & SECTIONS	20-23
BM ARCHITECTURAL	24-27
BARCLAY & MATHIESON	28-31
ANGUS F GUNN	32-33

ABOUT THE BM GROUP

GROUP COMPANY HISTORY	34-37
WEBSITES & APPS	38-39
GROUP PRODUCTS & SERVICES	40-41
MEET THE BOARD	42-43
GLOBAL PRESENCE	44-45
CONTACT INFORMATION	46



INTRODUCTION

BM Group stands as a dynamic consortium, boasting a rich tapestry of heritage and excellence through its constituent companies—Barclay & Mathieson, Abram Pulman & Sons, Industrial Metal Services, and Steel Plate & Sections. These entities, each with its unique legacy, collectively contribute to the robust foundation upon which BM Group thrives today.

Established over the years, with Barclay & Mathieson making its mark since 1877, Abram Pulman & Sons dating back to 1830, Industrial Metal Services founded in 1975, and Steel Plate Section established in 1965, BM Group represents a continuum of tradition and innovation in the UK's industrial landscape.

Our footprint extends far beyond the borders of the United Kingdom, as we proudly operate globally with strategic offices in the Netherlands and the United Arab Emirates. This global presence positions BM Group as a key player in the international steel market, facilitating seamless interactions and collaborations on a global scale.

At the helm of BM Group is Marubeni-Itochu Steel Inc. (MISI), a stalwart force in the steel industry. Formed in 2001 through the merger of steel business divisions from ITOCHU Corporation and Marubeni Corporation, MISI has evolved into a powerhouse, consistently expanding its expertise in steel product distribution. As the proud owner of BM Group, MISI brings with it a legacy of success and a commitment to delivering value across diverse sectors.

Within the intricate landscape of steel distribution, a realm demanding specialised knowledge and adaptability, the MISI relentlessly pursues added value. Our integrated approach to steel distribution production is a testament to our commitment to excellence, innovation, and the enduring quest for delivering superior value to our clients and partners.

BM Group, under the stewardship of Marubeni-Itochu Steel Inc., is poised to lead and innovate in the ever-evolving global steel industry. We look forward to forging lasting partnerships, creating value, and contributing to the continued success of our clients and stakeholders worldwide.

OUR MISSION

"To be the leading supplier of quality steel, associated products and innovative services, to support sustainable business for our customers and partners as the employer of choice in our sector."

OUR VALUES



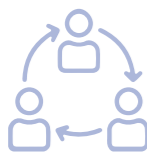
INNOVATION

We challenge boundaries to create new opportunities to benefit our organisation and our partners



INSPIRATION

We offer an environment to promote and develop a culture of engagement, excitement and commitment in our people



COLLABORATION

We will build close and lasting relationships, working together to create value, for mutual success



INTEGRITY

We will demonstrate our core values in everything we do, promoting honesty and fairness, fostering a diverse, equal and ethical future for all



EXCELLENCE

We will continuously learn and improve, to deliver outstanding value for our customers and stakeholders





BMSTEEL

COMPANY OVERVIEW

BM Steel has over 145 years' experience as steel stockholders in the UK; we now operate from 15 locations around the country, from Aberdeen down to Avon and Sittingbourne across to Bangor.

With in-stock steel products including universal beams, universal columns, rounds, hollow section, bright bars and many more, we have an extensive product range to cater for any requirement with free bespoke cutting (online only) and depot collection.

With in house experts on all stocked items we can offer much more than a competitive pricing, peace of mind. From point of order to installation all BM Steel orders come with industry leading support and assistance.

Our extensive stock range enables us to satisfy most of our customers' requirements with same or next-day delivery. Through our well-established inter-branch transfer system, each site has access to our total group stocks.

MORE THAN STEEL



CASE STUDIES & PROJECTS

CONTAINERISED NOISE CONTROL SYSTEMS - MARINE SECTOR

Our client specializes in delivering a wide range of noise and gas control systems across various industries.

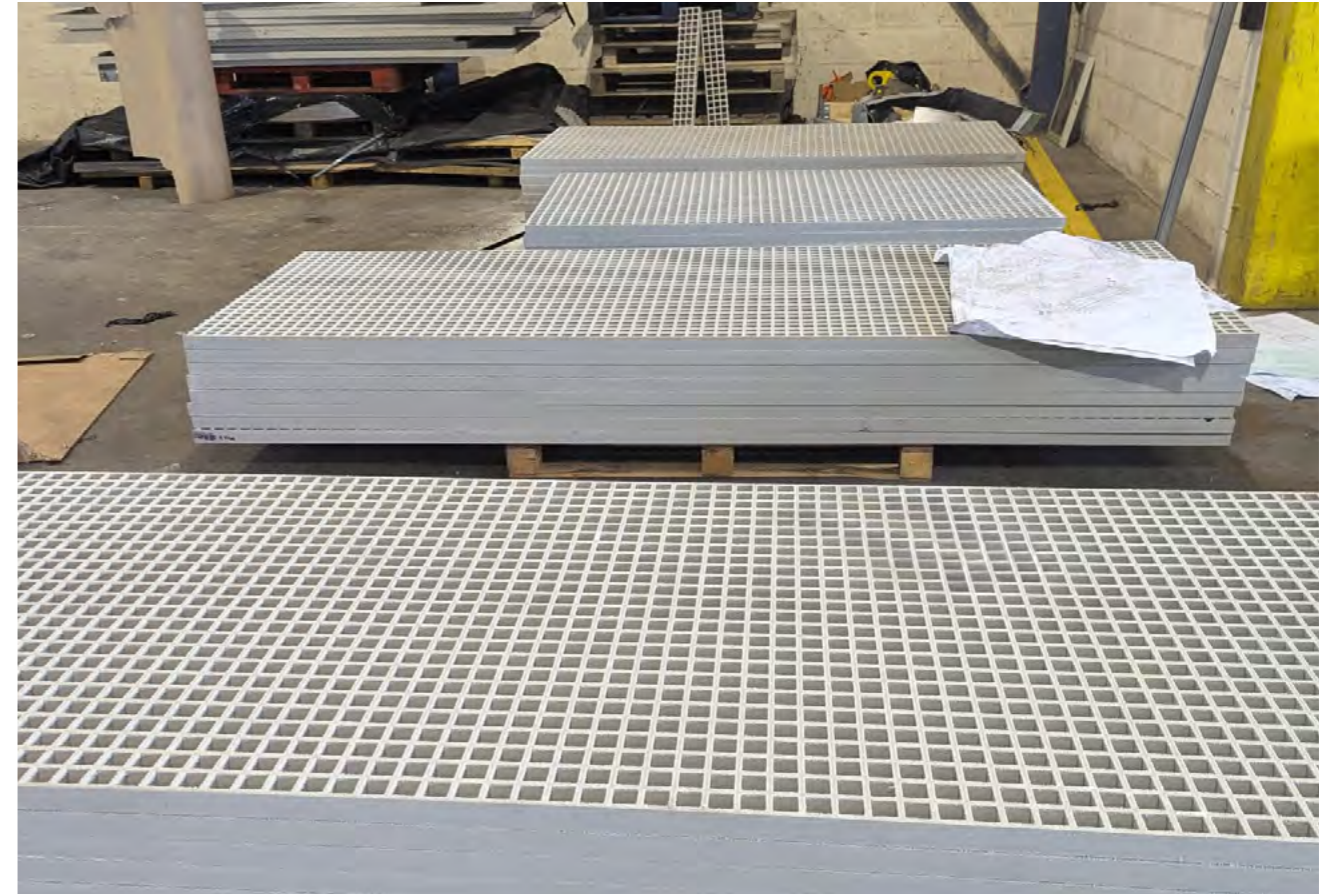
When they were commissioned to supply container-mounted noise control systems for the marine transport sector, they identified BM Steel as the ideal partner to meet their project requirements.

The project involved the supply of precision-engineered materials to create a robust supporting structure for the noise control systems.

BM Steel provided tailored solutions, including:

Cut-to-size Parallel Flange Channels (PFCs): These formed the core structural components.

GRP Components: This included GRP mesh flooring, GRP handrails, and GRP access ladders, ensuring durability and compliance with marine industry standards.





COMPANY OVERVIEW

Industrial Metal Services (IMS), established in 1975, has evolved into one of the largest steel stockholders in the south of England. With over four decades of experience, IMS offers an extensive range of materials, including steel sections, tubes, sheets, plates, mesh, stainless steel, and aluminium, catering to diverse construction, engineering, and architectural projects across the UK.

IMS provides a comprehensive suite of steel processing services designed to meet the specific needs of its clients. These services include shot blasting and painting, shearing, folding, de-coiling, sawing, profiling, plasma, and laser cutting. This extensive service offering ensures that IMS can deliver tailored solutions, maintaining high standards of quality and precision.

In 2017, IMS became part of BM Group, a move that has strengthened its position in the market and expanded its capabilities.

Operating from its headquarters in Shoeburyness, England, IMS continues to uphold its commitment to providing exceptional service and high-quality products to its customers.

With a workforce of approximately 150 employees, IMS prides itself on its ability to offer competitive pricing and a delivery service that is unrivalled within the industry. The company's dedication to excellence has solidified its reputation as a reliable partner for clients seeking comprehensive metal solutions.

IMS's integration into the BM Group's corporate brand identity reflects its alignment with the group's values of excellence, innovation, and customer focus. This unified identity underscores IMS's role within the larger organization while recognizing its individual strengths and expertise in the metal services industry.

MORE THAN STEEL



CASE STUDIES & PROJECTS

CITY ISLAND, LONDON - ELEVATED SPORTS PITCH

Our client undertook the ambitious task of designing and constructing a state-of-the-art sports ground atop a residential block just outside City Island. This unique project required innovative solutions and premium materials to ensure safety and functionality.

To support the project, we supplied an extensive range of Box Sections, which were used to fabricate the robust frame for the multi-sports pitch. Additionally, the client sourced a significant quantity of Weld Mesh from our diverse inventory.

These mesh panels were expertly integrated as infills between the Box Section posts, creating a secure protective barrier to prevent sports equipment, such as tennis balls or footballs, from falling from the height of 70 stories—a critical safety measure for such an elevated location.

This collaboration highlights our ability to provide high-quality materials for complex and innovative projects.



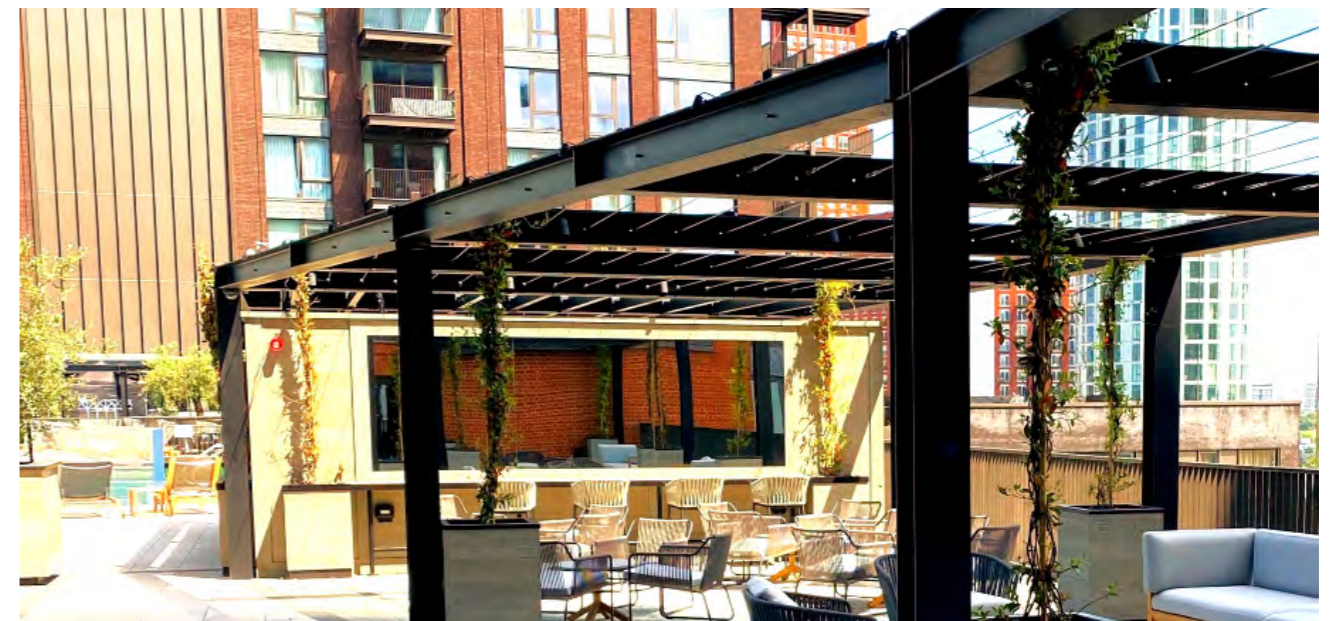
EMBASSY GARDENS, LONDON - PLANTERS AND ROOFTOP TERRACE

For this project, our client approached us with designs requiring a wide range of materials to bring their vision to life

The beams, prominently featured in the attached images, were sourced from our extensive inventory, and used to construct a striking architectural centrepiece for the rooftop terrace. This feature transformed the terrace into a visually stunning focal point, admired by neighbouring buildings and businesses alike.

In addition to the beams, we supplied several products from our Merchant Bar range, including Flat Bar and Solid Round Bar, as well as smaller Box Section sizes. These materials were integral in creating a seamlessly finished safety railing, ensuring observers could enjoy the breathtaking views of Embassy Gardens safely and securely, without the risk of falls.

Our materials, supplied indirectly via ALL0109, played a pivotal role in the success of these remarkable projects.





COMPANY OVERVIEW

Abram Pulman & Sons Ltd. was established in 1830 as a steel stockholding company. Today, we are a leading steel processing centre in the North of England.

As a business we pride ourselves on our knowledge, flexibility and service. We supply a diverse range of industries including fabricating, sheet metal, construction and quarrying, engineering, storage, oil and gas, transport, aerospace, rail, offshore and renewable energy and recycling, among others.

We believe our key strengths are investment in technology, machinery and people. These three factors ensure that the right products are specified, cut and finished as required and most importantly are delivered on time and within budget whatever the size of order.

As a company we are certified to ISO 9001 and EN 1090-2. ISO 9001 is a quality standard focused on achieving customer expectations and delivering customer satisfaction. We are fully compliant for CE marking with full Factory Production Control (FPC) to meet the requirements of BS EN 1090-2 systems and are approved by Lloyd's Register.

Our recently upgraded computer system provides complete traceability of orders allowing us to be more efficient with improved operational performance whilst remaining competitive on pricing. Our knowledgeable team and internal systems provide extra assurance for customers that they are working with a team they can trust.

THE CUTTING EDGE STEEL SERVICE



CASE STUDIES & PROJECTS

MCDONALD'S GOLDEN ARCHES - CANOPY LEGS



Our client specialises in the production of high-quality, large-scale shopfront signage for major retail and food service brands, including McDonald's. Our expertise extends to the mitre cutting of the Golden Arches 'M', ensuring a flawless finish that meets the stringent quality standards of this globally recognised brand.

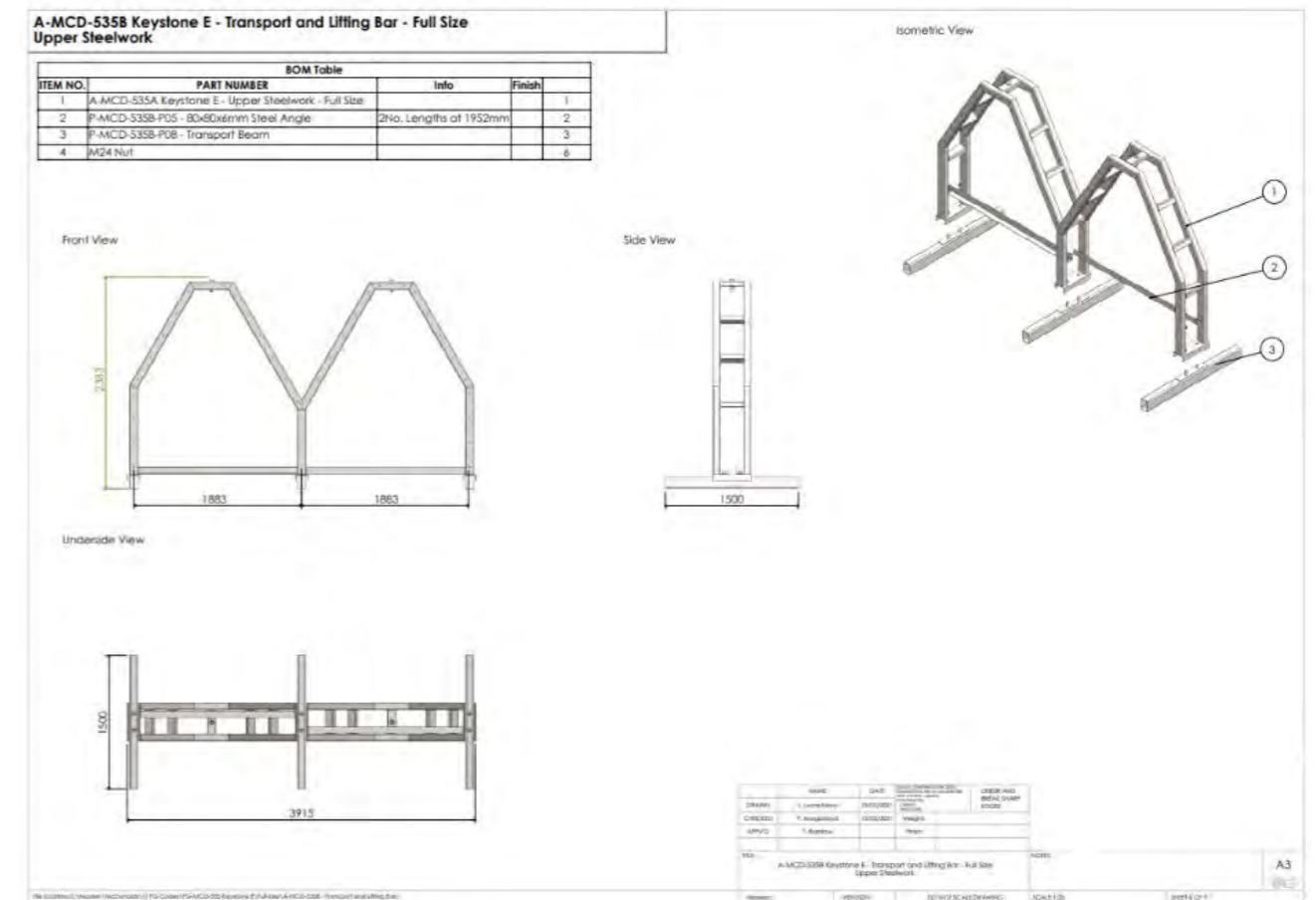
Advanced Production Techniques

Our commitment to innovation is demonstrated through a recent investment in a state-of-the-art bevelling machine. This machine is used to bevel the canopy legs, enhancing its precision and durability. The new equipment has significantly improved production efficiency and the aesthetic appeal of their signage.

Consistent and Reliable Logistics

To ensure timely and reliable delivery, we have implemented a dedicated weekly wagon service. This service guarantees that products reach McDonald's and other clients on schedule, reinforcing our reputation for reliability and strong customer relationships.

Our client continues to push the boundaries of quality and innovation in the signage industry. By combining advanced technology with skilled craftsmanship, Pulman Steel deliver signage solutions that uphold the integrity and image of the brands they serve, such as McDonald's. Their dedication to excellence is evident in every aspect of their operations, from production to delivery.





COMPANY OVERVIEW

Established in 1965, SPS has long been able to call upon its substantial stocks, close working relationships with producing mills, and comprehensive forward order programmes to give total flexibility of supply. This enables SPS to meet your immediate and long-term steel requirements.

Long-established trading links within the steel industry allow SPS to offer you a complete supply service of products outside the standard product range. This service saves you time and resources.

Our sales team provides a friendly and flexible approach to your steel requirements and has a wealth of experience ensuring you get the help and advice that you need. Whether you are purchasing a single item of steel or require a total project supply of

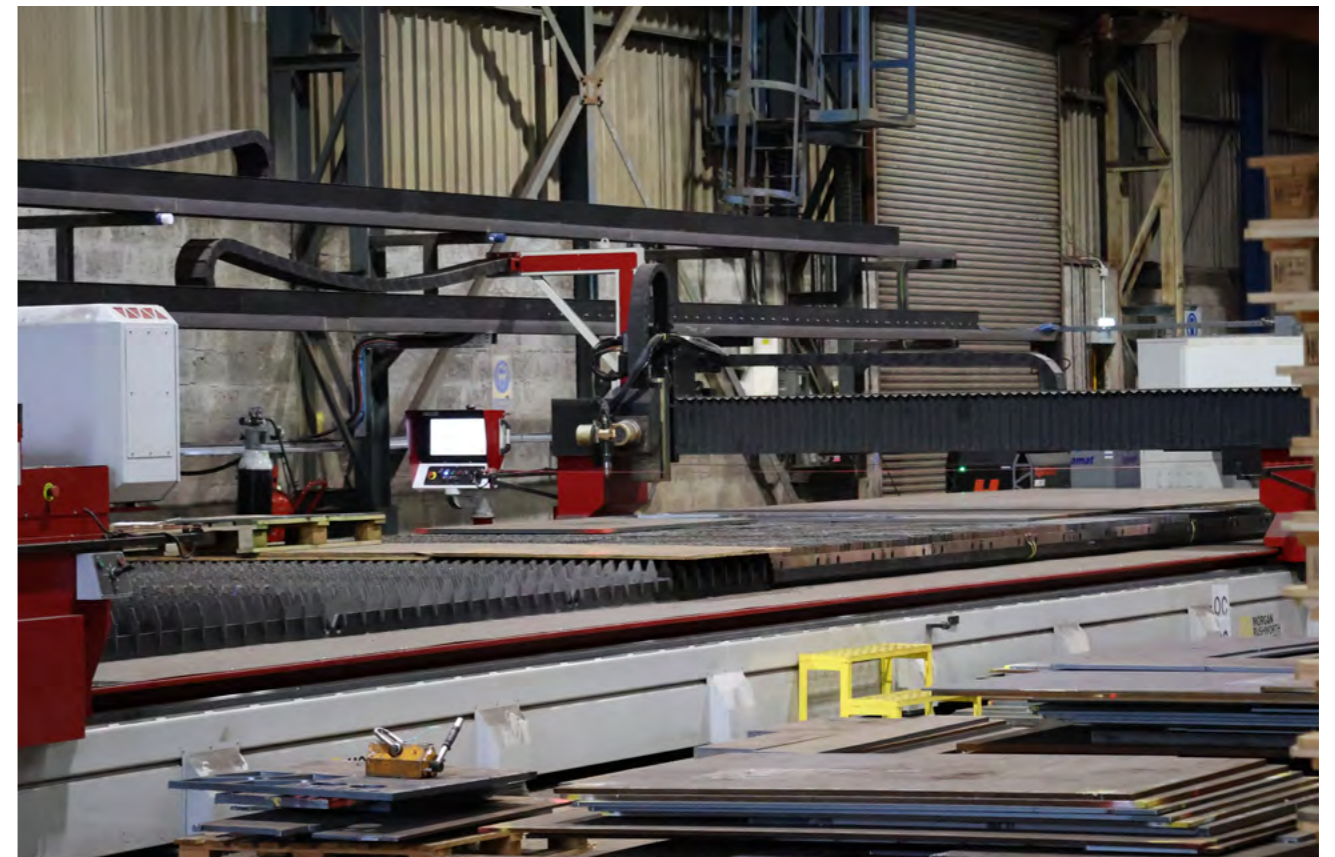
many thousands of tonnes, you need a steel supplier totally dedicated to meeting the individual and varied needs of each and every customer - SPS meets this challenge.

Steel Plate & Sections has over 55 years' experience in meeting the needs of:

- Oil & gas
- Offshore fabrication
- Renewable energy
- Pressure vessel and boiler manufacture
- Construction
- Materials handling
- Equipment manufacture
- Bridge building
- Shipbuilding and repair
- Civil and general engineering
- Advanced plasma profiling

and other industries throughout the world!

QUALITY YOU CAN TRUST EVERY TIME



CASE STUDIES & PROJECTS

NEART NA GAOITHE OFFSHORE WIND FARM - 15.5KM OFF FIFE COAST

SPS are proud to be offshore steel suppliers in the NNG project where the full commissioning is expected to be completed in 2025.

The Neart na Gaoithe offshore wind farm will be located 15.5 km off the Fife coast and covers an area of approximately 105 km². EDF Renewables UK acquired the project in May 2018 as part of a competitive bidding process. ESB purchased a 50% stake in the project in November 2019.

The wind farm is already generating power into the national grid. The farm will house a total of 54 turbines, generating up to 450MW of green electricity, enough to power 375,000 homes.



AZERI CENTRAL EAST (ACE) OFFSHORE PLATFORM - AZERBAIJAN



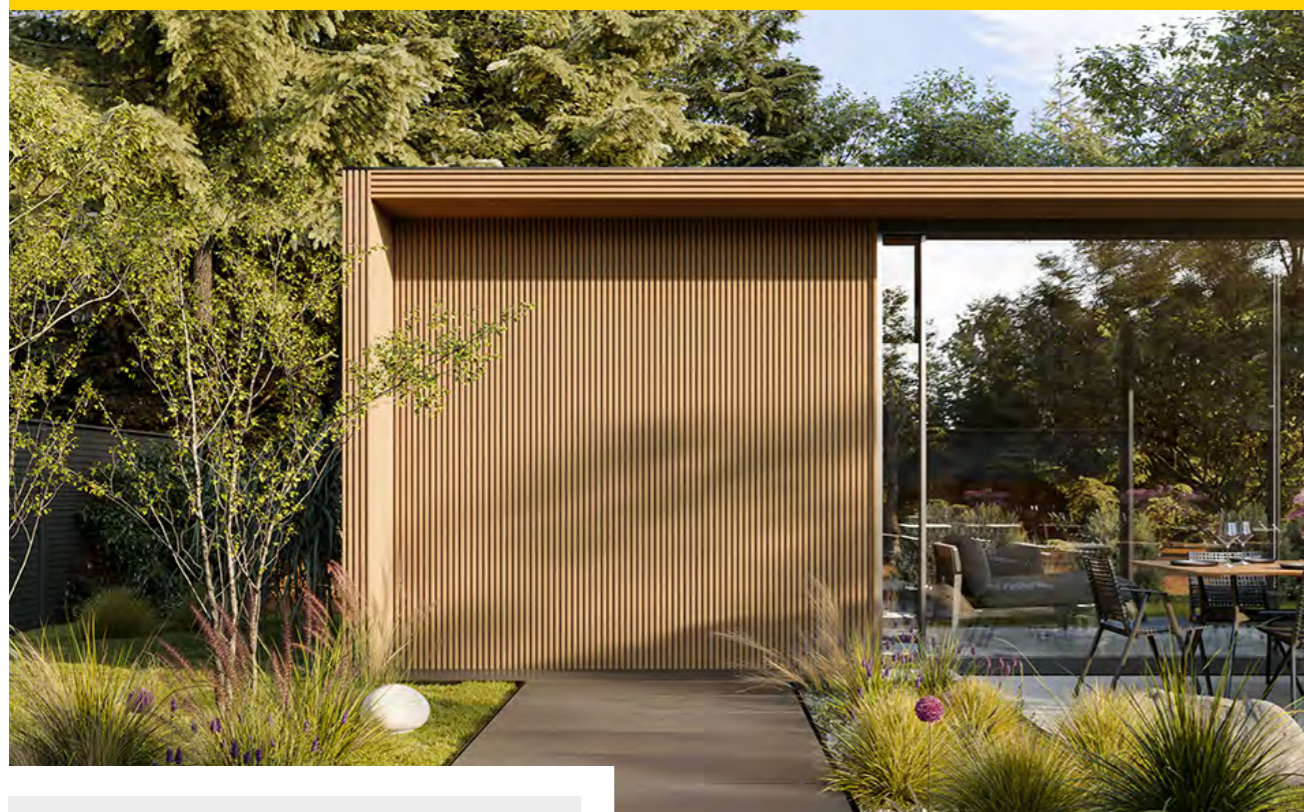
The \$6b project was announced following an agreement with the Government of Azerbaijan for extending the operational life of the ACG field until 2049. The project is designed to process 100,000 barrels each day of oil and 350 million standard cubic feet per day (Mscfd) of gas.

SPS played a crucial role in the project's success by supplying high-quality offshore steel essential for the construction of critical subsea infrastructure.



The project was sanctioned in April 2019. The sanction of ACE was the first major investment decision by the ACG partnership following the extension of the ACG Production Sharing Agreement (PSA) to 2049 was agreed in 2017. Around \$42 billion has been invested in the development of the ACG area since the original PSA signed in 1994.





BMARCHITECTURAL

COMPANY OVERVIEW

BM Architectural offers a wide range of stylish, high performance architectural systems, supplying construction and renovation projects, large and small, throughout the UK and Ireland.

Products include glass balustrades, structural glazing and frameless glass partitioning, steel doors and windows, A2-rated (non-combustible) balcony systems, and composite cladding and decking.

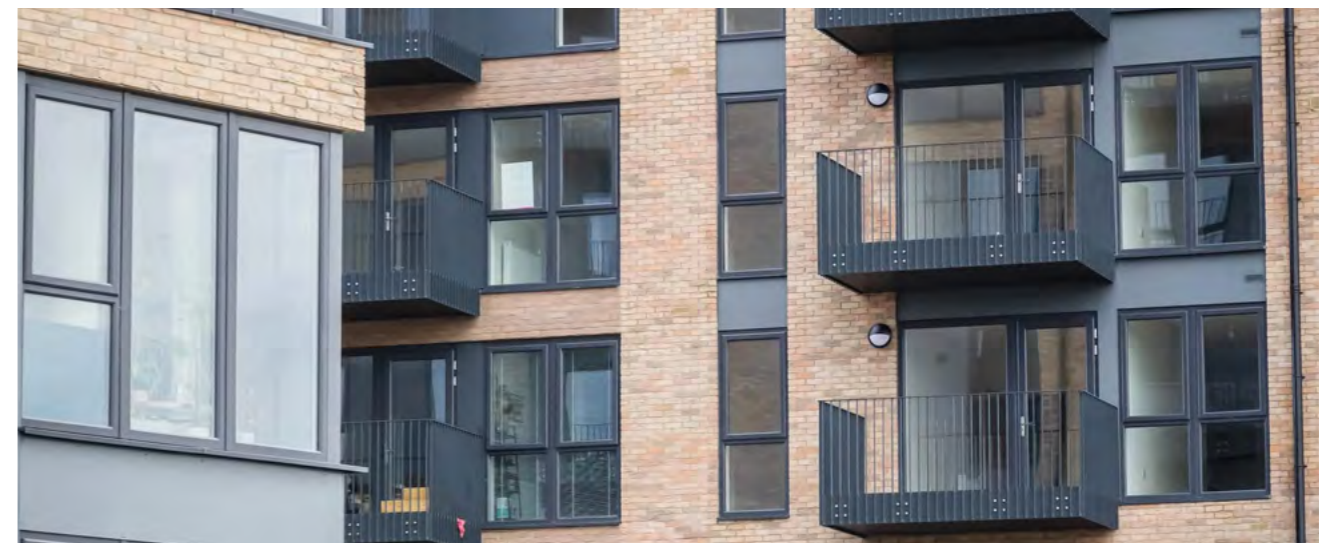
Available in a wide range of styles to suit any aesthetic, from an industrial to an elegant, contemporary look, our systems also enable architects and building owners to meet fall protection, thermal, fire and security legislative requirements. Technical and sales support is provided by our team at all stages of a project, from concept to installation.

Our non-combustible range meets new UK fire safety demands on high-rise buildings and consists of aluminium decking and railing, porcelain paving, glass balustrades and fibre cement cladding.

Our steel glazing systems, comprising curtain walling, doors, windows and partitions, can be designed with fire, smoke and even blast protection in mind, as well as the stringent thermal performance requirements typical in historic property renovations.

Our frameless and bolted glazing systems are ideal for inviting light into large indoor retail and public spaces, and our glass balustrades and composite cladding, decking and fencing are ideal for transforming the look of any outdoor space.

SPECIALISTS IN ARCHITECTURAL SYSTEMS



CASE STUDIES & PROJECTS

LEICESTER TIGERS RUGBY STADIUM - PEDESTRIAN FOOTBRIDGE

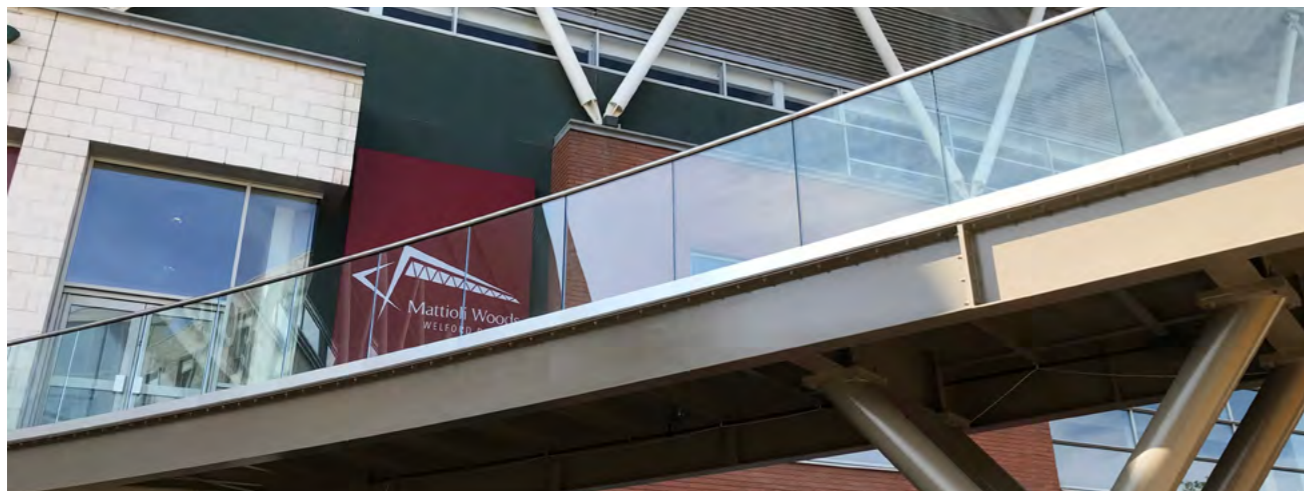


BM Architectural supplied the frameless glass balustrade installed on a raised pedestrian access route, linking the Leicester Tigers rugby stadium with adjacent facilities.

Classified as a heavy-duty application due to the footbridge experiencing very high footfall on match days and having potential for overcrowding, a 3kN balustrade system was specified.

A stainless steel channel holds the glass panels firmly in place along their base and is fixed directly to the structure. The system provides a durable, high strength and attractive safety barrier that meets stringent UK balustrade regulations.

The system is topped with a rounded stainless steel handrail, providing maximum comfort and safety for pedestrians while maintaining a minimalist, contemporary look.



LES QUENNEVAIS SCHOOL, JERSEY - GLASS ENTRANCE CANOPY

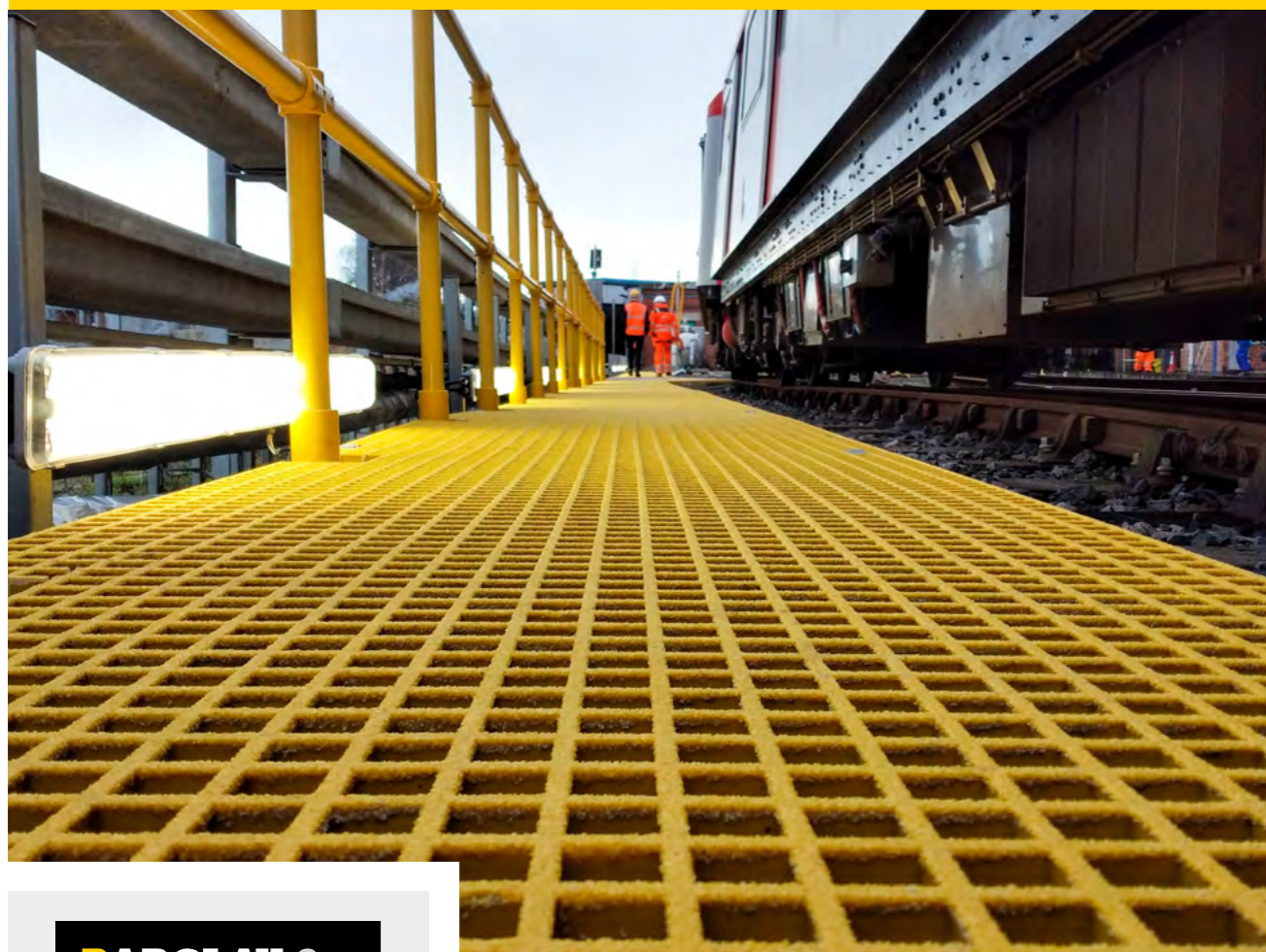


BM Architectural supplied the glass canopy and associated stainless steel fixings to the entrance of Les Quennevais School in St. Brelade, Jersey.

This high performance, low maintenance canopy provides visitors with shelter and shade from the elements, whatever the season.

It is tied back to the structure from above providing unobstructed access below. Architecturally it was the ideal solution; it blends seamlessly into the elegant look of the broader glass façade and functions without diminishing the natural light entering the foyer.





**BARCLAY &
MATHIESON**

COMPANY OVERVIEW

Barclay & Mathieson supplies a wide range of access and safety products manufactured from steel, aluminium and glass-reinforced polymer (GRP).

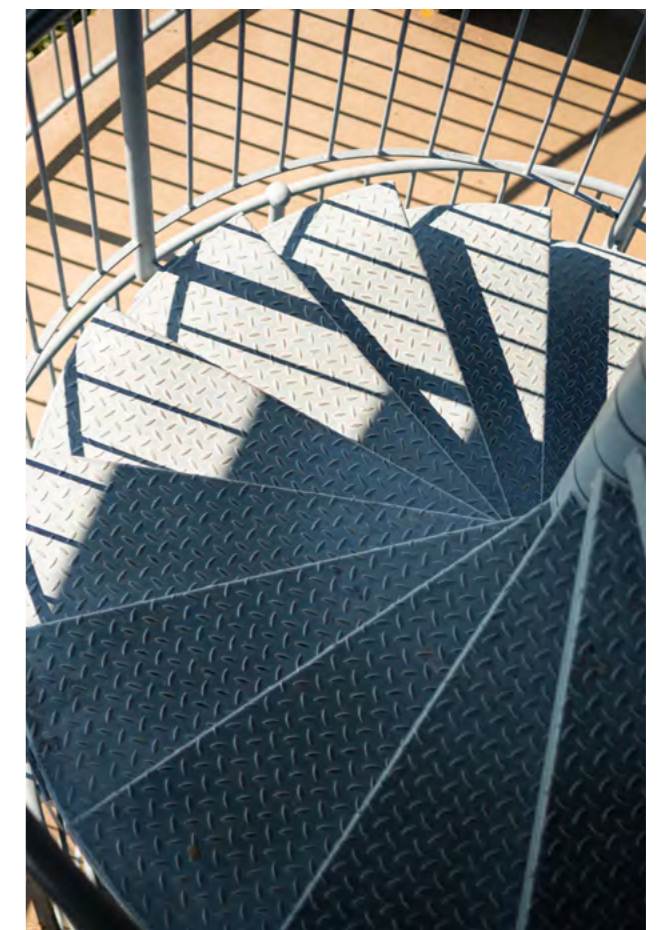
Products include grid flooring/grating, anti-slip plates/treads, structural flooring, handrails, gates, ladders and fencing, and these are supplied to a wide range of industry sectors including construction, infrastructure, and energy & utilities, with many standard items available from stock for next day delivery.

Barclay & Mathieson is a specialist supplier of GRP products; an innovative, easy-to-handle, low-carbon composite material

that offers many advantages over steel. Being non-corrosive, non-conductive and available in a range of industry-standard colours, our GRP grating and other profiles are ideal for access platforms and walkways located in the toughest environments, including waste water treatment, petrochemical and rail applications.

Technical and sales support is available from the team to help with correct product selection and installation. Lunch-and-learn training seminars are given both online and in-person to raise awareness and understanding of our GRP composite products.

YOUR TRUSTED PARTNER FOR ACCESS & SAFETY SOLUTIONS



CASE STUDIES & PROJECTS

RIVERS & CANALS - TIMBER JETTY WALKWAY REPLACEMENT



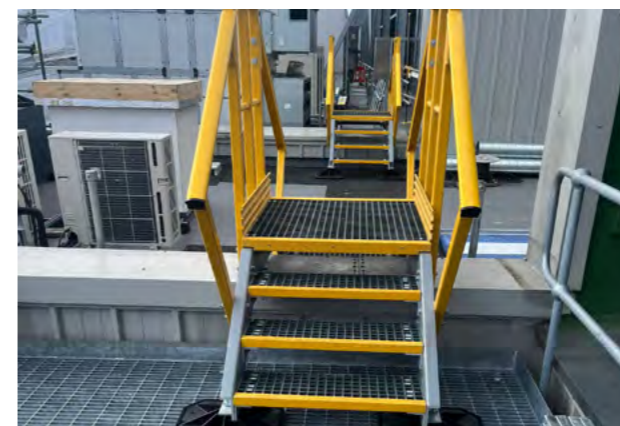
Barclay & Mathieson has supplied GRP Mini-mesh moulded grating to replace rotten, slippery timber on walkways at various sites throughout the UK, including the canals around visitor attractions The Falkirk Wheel and The Kelpies in Scotland.

Upgrade schemes of this type provide safer access to jetties for waterway users and the visiting public. Our GRP grating is non-slip and Mini-mesh is typically selected as it features small apertures in the grid to minimise the loss of items dropped by those using the walkways in the water below.

With a service life in excess of 50 years and requiring little to no maintenance, this GRP grating provides river and canal management companies with a durable, corrosion-resistant 'fit and forget' solution.



DATA CENTRE, KENT - ROOF AND PLANT ACCESS SYSTEMS



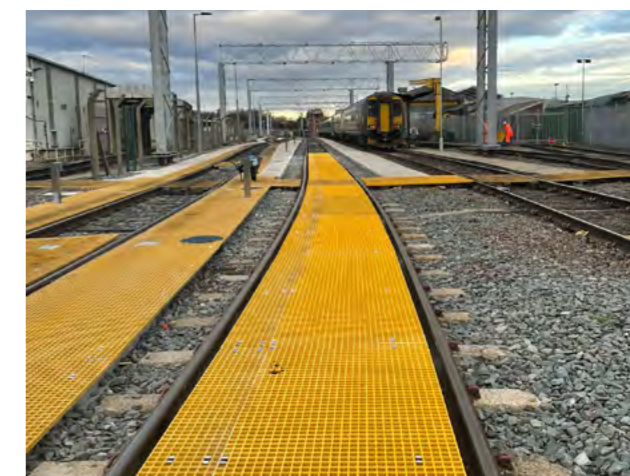
A full GRP roof and plant access solution from Barclay & Mathieson was installed at a new data centre in Kent, UK.

Providing the flexibility required for this complex application, the system comprised various GRP components including open mesh grating, solid channel profiles, stair

tread nosings and handrails.

Being light in weight, the GRP components were easy to transport to the roof and manoeuvre into position. The access system is non-slip, durable and low maintenance, requiring no secondary operations such as earthing or painting.

VARIOUS RAIL DEPOTS – SAFETY WALKWAYS



Barclay & Mathieson has supplied GRP moulded gratings to contractors responsible for installing walkways at rail depots for a number of rail companies.

This grating is used to mark out and provide safe, non-slip walking routes for train drivers, depot staff and contractors.

The non-conductive, low maintenance grating is available in a range of high visibility colours that are often used to identify different route types.



ANGUS F GUNN LTD

COMPANY OVERVIEW

Based in Airdrie, Scotland and established in 1958, Angus F Gunn Ltd is a leading supplier of steel products and services to the engineering and fabrication sectors in the UK and Ireland.

AFG has heaps of experience in providing high-quality steel solutions to a wide range of industries, including oil and gas, renewable energy, nuclear, and shipbuilding.

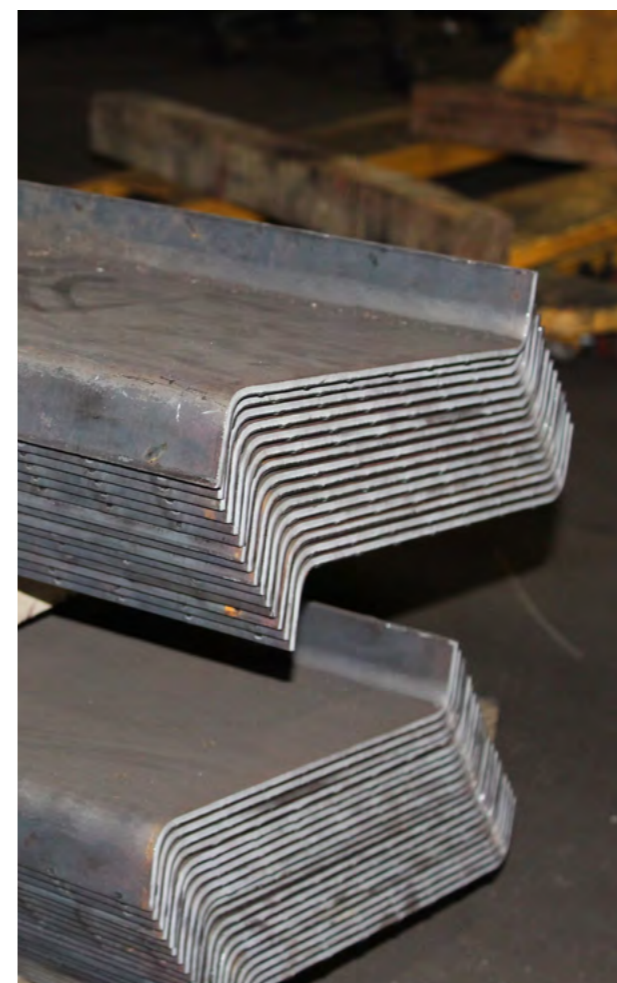
Angus F Gunn offers a comprehensive range of products, including mild steel, stainless steel, and aluminum alongside

their high-value-added services, including laser profiling, enabling precise and efficient processing to meet diverse client requirements.

With a focus on the Oil & Gas and Renewable Energy sectors, AFG has cultivated a strong and loyal clientele, underscoring its industry expertise.

The implementation of a new Material Requirements Planning (MRP) system has strengthened the company's management foundation, enhancing operational efficiency and resource planning.

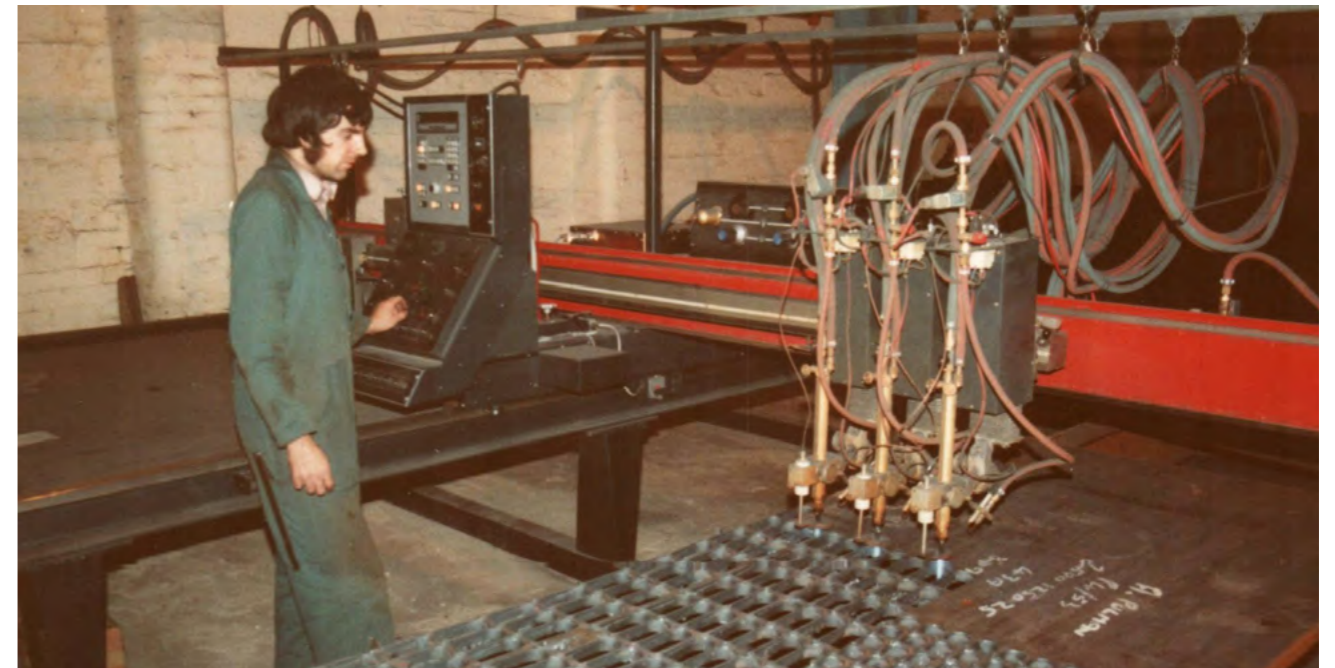
SPECIALISTS IN PROFILING



GROUP COMPANY HISTORY

- 1830** Abram Pulman & Sons (Pulman Steel) was founded - In Halifax, West Yorkshire, by Abram Pulman Iron Merchant in 3 locations.
- 1877** BM Steel established at Wallace Street, Glasgow as a steel stockholding business. Dealing with many shipbuilding, engineering sugar refining & building companies in the Glasgow.
- 1898** Pulman Steel acquired by F C Shoesmith - Iron & Steel Merchants
- 1925** BM Steel acquired by Dykes Family - The partnership of Barclay & Mathieson was purchased by the Dykes family.
- 1955** BM Steel becomes incorporated - as a private limited company as Barclay & Mathieson Ltd.
- 1957** BM Steel's Glasgow depot moved to its present site at Shieldhall Works, Hardgate Road.
- 1965** Incorporation of Steel Plate and Sections Limited (SPS) by Ralph Robbins, based in Birmingham. The focus of the company was to supply structural steels to the energy sector.
- 1975** Industrial Metal Services (IMS) was founded as Hootip Limited.
- 1978** IMS changed the name to South Essex Stockholder Limited.
- 1984** Pulman Steel moved to one location - Relocated to the current site on Walton Street, Sowerby Bridge.
- 1993** Mr C R Shoesmith at Pulman Steel retires after 44 years.
- 1997** BM Steel acquires Tatham Miller Ltd – Addition of the following sites to the BM Group portfolio, Bangor, Liverpool, Cheadle, Morecambe, Sheffield & Preston.
- 2002** SPS acquires the assets of M Taylor Steels and moved head office from Birmingham to Minworth Sutton Coldfield.

- 2003** SPS adds to its UK stock site locations and strategically placed stocks in the Netherlands, Dubai and Singapore to further develop its global presence.
- 2007** Steel Plate & Sections Chairman Julian Robbins retires and Mark Robbins remains MD through an agreed handover period.
- 2009** MD Mark Robbins leaves Steel Plate & Sections ending the founding family involvement.
- 2015** Pulman Steel Flooded - Affected by the catastrophic boxing day floods that hit Yorkshire & Lancashire.
- 2016**
 - Pulman Steel returns - with new production machinery.
 - BM Group acquires Industrial Metal Services (IMS).
- 2017** BM Group acquires Avon Steel - now known as our BM Steel Avon Depot.
- 2019**
 - BM Group acquires Pulman Steel.
 - BM Steel Sittingbourne renamed to IMS Sittingbourne.
- 2020** SPS left the STEMCOR group and was acquired entirely by the BM Group.
- 2021** BM Steel launched their first e-commerce website.
- 2022** The BM Group joined the Marubeni-Itochu Steel Inc. Group.
- 2023**
 - IMS launched their first e-commerce website.
 - Kyle Greenwood becomes CEO of the BM Group.
- 2024**
 - IMS are the first in the UK to invest in the state-of-the-art 3D coping line & shotblasting/priming line.
 - BM Group acquires Angus F Gunn Ltd.



E-COMMERCE & APPS



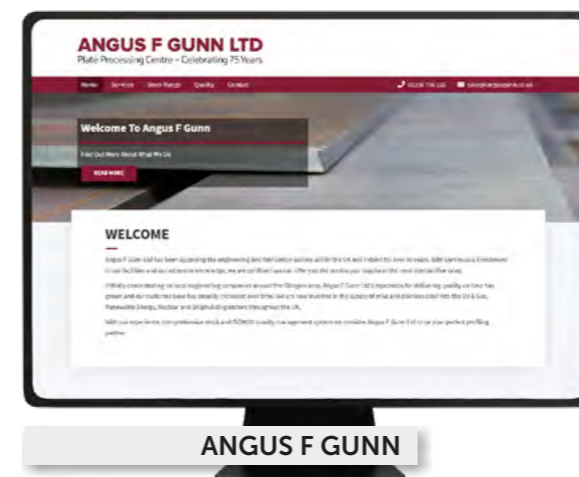
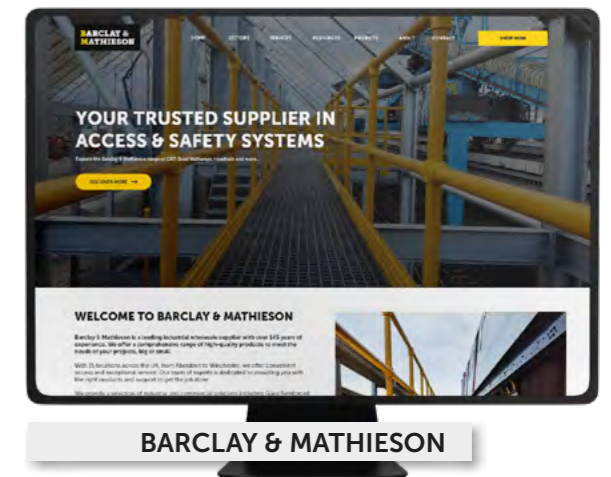
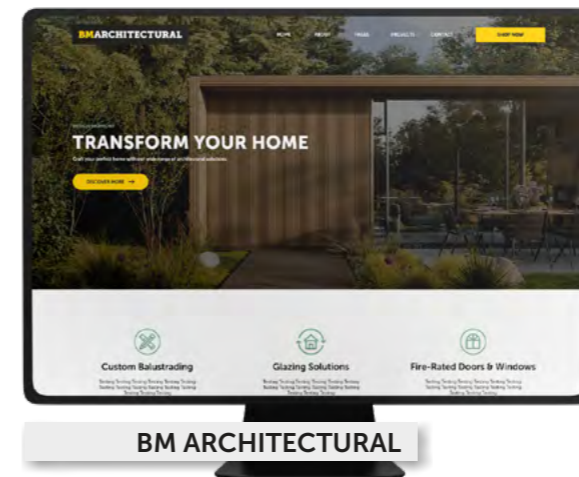
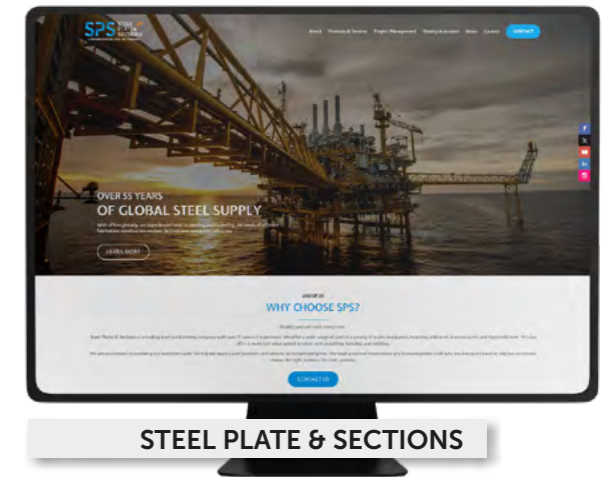
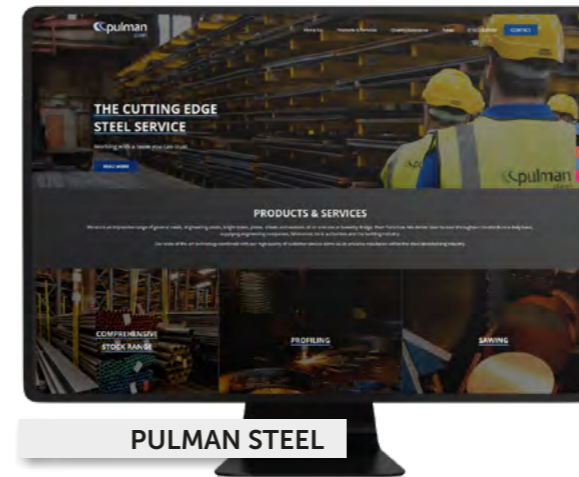
Both of our e-commerce websites feature a comprehensive catalog of steel products, including universal beams, columns, hollow sections, and sustainable composite materials for landscaping. Customers can explore balustrades, industrial handrails, and safety solutions alongside resources such as product specifications, FAQs, and a depot locator for personalized support. The platform is designed to streamline product searches and enhance customer experience.

More tailored towards the IMS site due to their reputation in the profiling sector, we showcase our range of value-added services such as shotblasting, painting, folding, cutting and of course, our state-of-the-art coping line. These services are available on both the IMS site and the BM site, specific to a customers location.

We host a wide range of payment methods including standard card payments, Google/Apple Pay and PayPal. We also offer IwocaPay which is a financing service for our trade customers which allows you to spread your cost over 3 months with a maximum £30,000 spend, this method is entirely interest-free with no fees.

The BM Steel mobile app, available on iOS and Android, provides seamless access to the same extensive product range. Customers can browse, place orders, and manage accounts on the go. The app includes the same secure payment options, such as card payments and interest-free financing through IwocaPay. Users can track orders, manage saved products, and receive notifications on new arrivals and exclusive offers, ensuring they stay updated with the latest developments.

WEBSITES



GROUP PRODUCTS & SERVICES

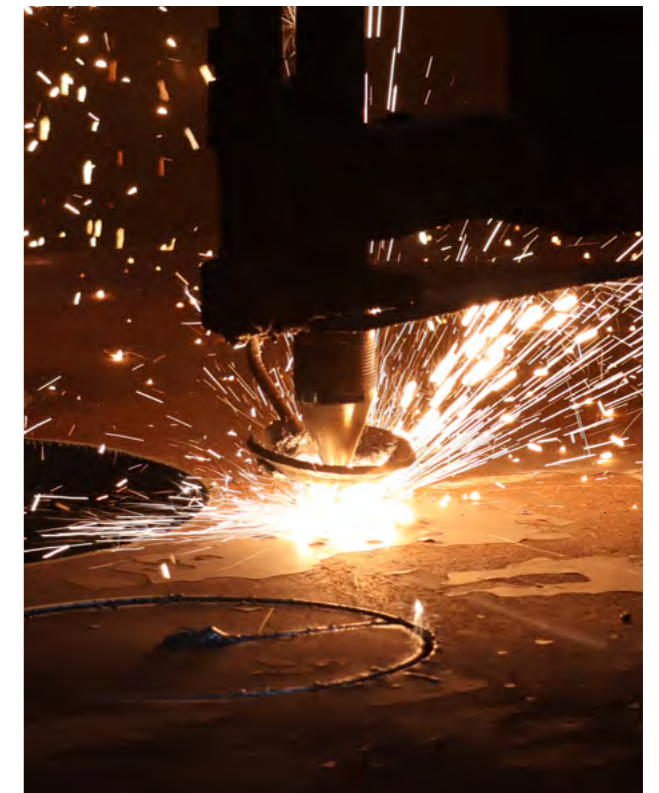
	BMSTEEL	IMS	pulman steel	SPS STEEL PLATE & SECTIONS	ANGUS F GUNN	BMSTEEL	IMS	pulman steel	SPS STEEL PLATE & SECTIONS	ANGUS F GUNN	BARCLAY & MATHIESON
Structural Sections	✓	✓	✓	✓	✓	✓	✓	✓	✓	✓	
Re-rolled Products	✓	✓	✓	✓	✓	✓	✓	✓	✓	✓	
Hollow Sections	✓	✓	✓	✓	✓	✓	✓	✓	✓	✓	
Engineering Steel	✓	✓	✓	✓	✓	✓	✓	✓	✓	✓	
Sheets & Plates	✓	✓	✓	✓	✓	✓	✓	✓	✓	✓	
Welded Mesh	✓	✓	✓	✓	✓	✓	✓	✓	✓	✓	
Reinforcement Bars	✓	✓	✓	✓	✓	✓	✓	✓	✓	✓	
Nuts & Bolts	✓	✓	✓	✓	✓	✓	✓	✓	✓	✓	
Offshore Steel				✓	✓						
Stainless Steel				✓	✓						
Seamless Tubes				✓	✓						
Pressure Vessel Steel				✓	✓						
Tools & Workwear	✓	✓	✓			✓	✓	✓	✓	✓	✓
Straight Cutting	✓	✓	✓	✓	✓	✓	✓	✓	✓	✓	
Mitre Cutting	✓	✓	✓	✓	✓	✓	✓	✓	✓	✓	
Shotblasting	✓	✓	✓	✓	✓	✓	✓	✓	✓	✓	
Painting	✓	✓	✓	✓	✓	✓	✓	✓	✓	✓	
Plasma Profiling	✓	✓	✓	✓	✓	✓	✓	✓	✓	✓	
Oxy-Fuel Profiling	✓	✓	✓	✓	✓	✓	✓	✓	✓	✓	
Laser Profiling	✓	✓	✓	✓	✓	✓	✓	✓	✓	✓	
Shearing	✓	✓	✓	✓	✓	✓	✓	✓	✓	✓	
Folding	✓	✓	✓	✓	✓	✓	✓	✓	✓	✓	
Drilling	✓	✓	✓	✓	✓	✓	✓	✓	✓	✓	
Punching	✓	✓	✓	✓	✓	✓	✓	✓	✓	✓	
Cropping	✓	✓	✓	✓	✓	✓	✓	✓	✓	✓	
GRP Cutting	✓	✓	✓	✓	✓	✓	✓	✓	✓	✓	✓

BMARCHITECTURAL

Glass Balustrade
Juliet Balconies
A2 Aluminium Decking & Railing
A1 Porcelain Paving
A2 Joists & Pedestals
Composite Cladding, Decking & Fencing
Recycled Plastic Joists
Steel Windows & Doors
Fire-Rated Doors & Curtain Walling
Security Glass Doors
Frameless Glass Systems

BARCLAY & MATHIESON

Handrail Standards
Handrail Tubes & Bends
Key Clamps
Fencing & Gates
Perforated Planks
Stair Treads
Open Steel Flooring
GRP Grating
GRP Handrailing
GRP Sheets
DDA Assist Hardware



MEET THE BOARD



KYLE GREENWOOD
BM GROUP CEO



MARK MORGAN
CHIEF PEOPLE OFFICER



NAOHIRO TAKEMOTO
CHIEF INTEGRATION
OFFICER



MICHAEL MCLINTOCK
CHIEF COMMERCIAL OFFICER
(BM STEEL, IMS)



RICHARD CALVELEY
CHIEF COMMERCIAL OFFICER
(SPS)



CHRISTOPHE CLUZEL
CHIEF OPERATING OFFICER



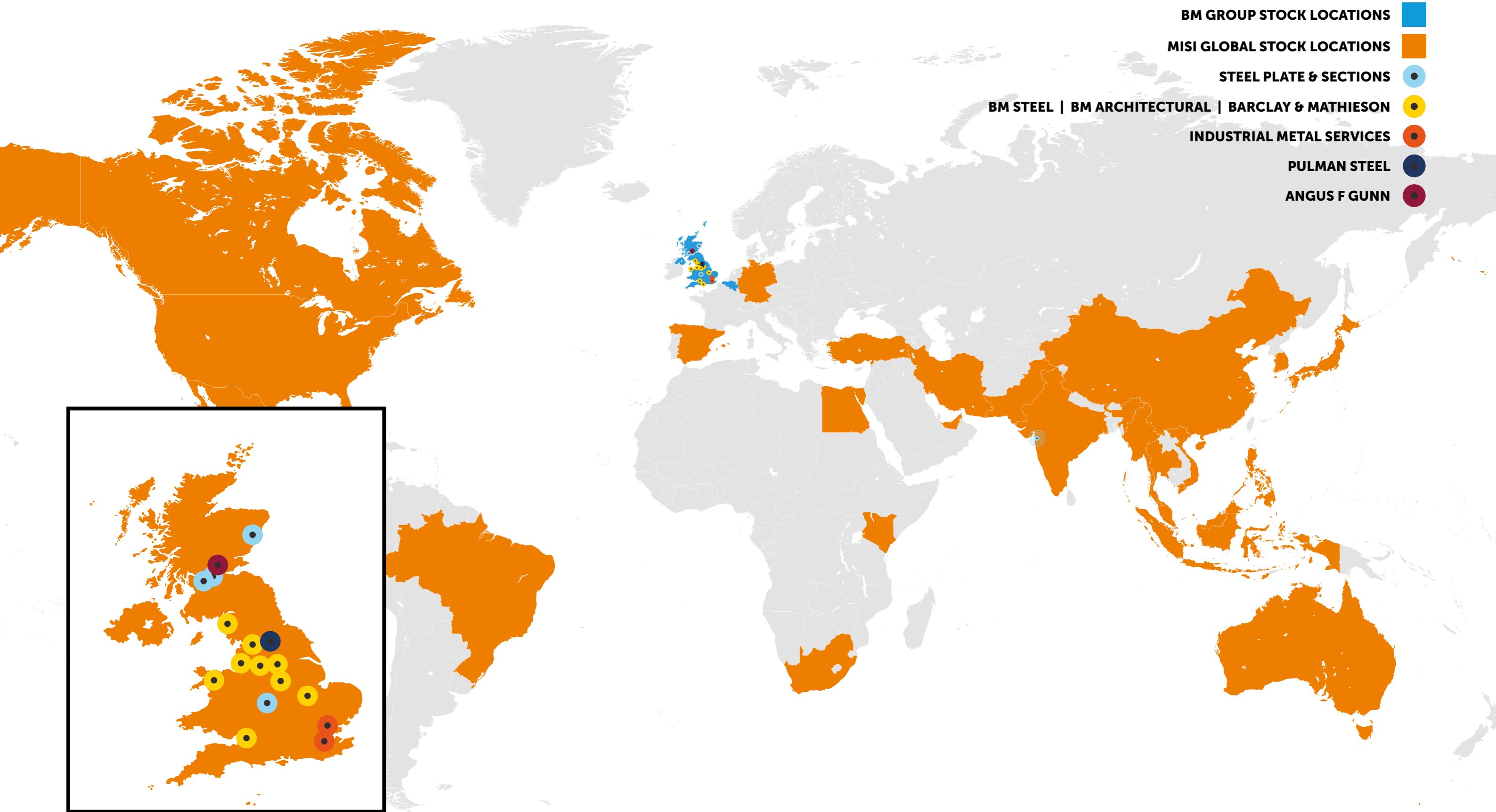
JEAN-PIERRE LAJARIGE
CHIEF COMMERCIAL OFFICER
(B&M, BM ARCHITECTURAL)



ANDREW LIMMER
CHIEF FINANCIAL OFFICER



GLOBAL PRESENCE



CONTACT INFORMATION

ABERDEEN

Cloverfield Rd, Bridge of Don
 ABERDEEN AB23 8FE
 T: +44 1224 702 771
 aberdeen@bmsteel.co.uk

ANGUS F GUNN

Dalmacoulter Road,
 AIRDRIE ML6 7UD
 T: +44 1236 766102
 sales@angusgunn.co.uk

AVON

Midsomer Enterprise Park,
 AVON BA3 2BB
 T: +44 1761 416721
 avon@bmsteel.co.uk

BANGOR

Unit 18, Llandygai Ind. Est.
 BANGOR LL57 4YH
 T: +44 1248 364 041
 bangor@bmsteel.co.uk

SPS BELLSHILL

Strathclyde Business Park
 BELLSHILL ML4 3PR
 T: +44 141 440 5860
 sales@sps-bmsteel.co.uk

SPS BIRMINGHAM

Birmingham Business Park
 BIRMINGHAM B37 7YE
 T: +44 121 313 4300
 sales@sps-bmsteel.co.uk

CHEADLE

Stanley Green Ind. Est.
 CHEADLE HULME SK8 6QZ
 T: +44 161 485 8535
 cheadle@bmsteel.co.uk

GLASGOW

Shieldhall Works, Hardgate Rd,
 GLASGOW G51 4TB
 T: +44 141 445 2591
 glasgow@bmsteel.co.uk

LIVERPOOL

Byng St/Seymour St,
 BOOTLE L20 1EE
 T: +44 151 922 4265
 liverpool@bmsteel.co.uk

MORECAMBE

Middlegate, White Lund Ind.
 MORECAMBE LA3 3BN
 T: +44 1524 67241
 morecambe@bmsteel.co.uk

NOTTINGHAM

Basford Works, Arnold Rd,
 NOTTINGHAM NG6 0EF
 T: +44 115 970 1171
 nottingham@bmsteel.co.uk

PETERBOROUGH

Oxney Road, Eastern Industry,
 PETERBOROUGH PE1 5YW
 T: +44 1733 312 921
 peterborough@bmsteel.co.uk

PRESTON

Unit 1, Sellers St,
 PRESTON PR1 5EU
 T: +44 1772 459 111
 preston@bmsteel.co.uk

BARCLAY & MATHIESON

293 Coleford Rd, Darnall
 SHEFFIELD S9 5NF
 T: +44 114 254 3220
 sales@barclayandmathieson.com

BM ARCHITECTURAL

293 Coleford Rd, Darnall
 SHEFFIELD S9 5NF
 T: +44 114 254 3226
 sales@bmarchitectural.com

IMS SITTINGBOURNE

1-5 Millen Rd, Sittingbourne,
 KENT ME10 2BQ
 T: +44 1795 293 104
 sales@industrialmetal.co.uk

IMS SHOEBOURNESS

Metalstock House, Vanguard Way
 ESSEX SS3 9RE
 T: +44 1702 296 955
 sales@industrialmetal.co.uk

PULMAN STEEL

Walton Street
 SOWERBY BRIDGE HX6 1AN
 T: +44 1422 833 993
 sales@pulmans.co.uk

- BM STEEL
- INDUSTRIAL METAL SERVICES
- PULMAN STEEL
- ANGUS F GUNN
- STEEL PLATE & SECTIONS
- BM ARCHITECTURAL
- BARCLAY & MATHIESON



